

STANDARD DRY PRESSURE GAUGES DN 40, 50 , 63, 80, 100 & 150

Page 1

STANDARD DRY PRESSURE GAUGES DN 40, 50 , 63, 80, 100 & 150

Usable with liquid or gaseous fluids that do not attack chemically the alloys of copper, do not present a high stickiness and do not crystallize.

Their preferable application is in pneumatic and hydraulic circuits, compressors, filters and pressure regulators. They fulfil norm CE.

Constructive and functional characteristics:

Accuracy:

Ø40 Type 2,5 according to EN 837-1.

Ø50 & Ø63 Type 1,6 according to EN 837-1.

Ranges: -1..0 to 0..40 bar for DN 40 and DN 50, -1..0 to 0..400 bar for DN 63 or any other equivalent unit of pressure or vacuum, standard ranges according to DIN 16 128.

Ambient temperature: -20...+60°C.

Process fluid temperature: Max. +60°C.

Temperature error:

Additional error when the temperature of the pressure element deviates from 20°C. +/-0,3% every 10 °C of change.

Working pressure: Max 75% of E.S.

Temporary overpressure: Not applicable.

Process connection Record: In brass.

Elastic element: Phosphoric bronze. In "C" for ≥ 40 bar scales. In spiral for >40 bar scales.

Case: Ø40,50 y 63 mm In ABS plastic, other diameters black painted steel

Window: Ø40,50 y 63 mm Clear plastic.. other glass window

Movement: In brass.

Pointer: Painted black aluminium.

Optional extras:

Tin-silver welding.

Glass window.

Other accuracy ranges. .other connections, special request



This publication does not try to establish the bases of a contract and the company keeps the right to modify without previous notice the design and the specifications of the instruments, in accordance with his politics of continued development.

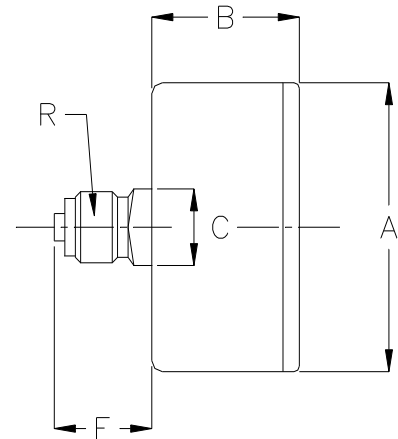
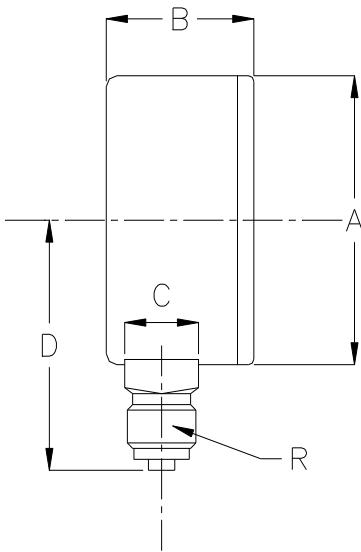
MEI Manometría e Instrumentación, s.l.

Pol. Ind. "Gelidense" 3, nave 19 E-08790 Gelida - Barcelona

Tf. +34 937083 110 Fax. +34 937 083 109 www.mei.es e-mail: info@mei.es

**STANDARD DRY PRESSURE GAUGES
DN 40, 50, 63, 80, 100 & 150**

DIMENSIONS



Bottom type					
DN	A	B	C	D	R
40	42	25	11x11	27,5	1/8"
50	53	28	14x14	48	1/4"
63	63,5	28	14x14	51	1/4"
80	80	35	22x22	62	1/2"
100	100	35	22x22	72	1/2"
150	150	45	22x22	97	1/2"

**DIMENSIONS
(mm)**

Back type					
DN	A	B	C	E	R
40	42	25	11x11	14	1/8"
50	53	28	14x14	19	1/4"
63	63,5	28	14x14	19	1/4"

This publication does not try to establish the bases of a contract and the company keeps the right to modify without previous notice the design and the specifications of the instruments, in accordance with his politics of continued development.